

CLARK COUNTY

“ARES / RACES”



NEW MEMBER

TRAINING

We want to remove the fear!



New Member Information

WELCOME

Jerry Schue

K7KWO

K7KWO@ARRL.NET

Clark County ARES/RACES

- **INTRODUCTION TO ARES / RACES FOR NEW MEMBERS.**
- **PURPOSE: TO PROVIDE NEW MEMBERS INTRODUCTORY INFORMATION IN SUPPORT OF THEIR TEAM LEADERS, SO THEY MAY BE A PRODUCTIVE MEMBER UPON BEING ASSIGNED TO THEIR TEAM.**

Clark County ARES/RACES

- **What are “ARES” and “RACES”?**
 - **ARES (ARRL SPONSORED):**
 - AMATEUR RADIO EMERGENCY SERVICE
 - **RACES (FEMA ADMINISTERED):**
 - Radio Amateur Civil Emergency Service

Clark County ARES/RACES

- **Mission and Goals of CCARES/RACES:**
 - Relationship to Clark County Amateur Radio Club (CCARC)
 - Who is and what is the role of CRESA in Clark County Emergency Management
 - What Agencies do we support
 - What about flexibility when we are tasked

CCARES MISSION STATEMENT

- **Clark County ARES (Amateur Radio Emergency Service) is a volunteer organization of skilled Amateur Radio operators, licensed by the Federal Communications Commission (FCC) and sponsored by the American Radio Relay League (ARRL) and the Federal Emergency Management Agency (FEMA), who provide non-commercial emergency communication services during emergencies and disasters as a public service to Clark County Emergency Services Agency (CRESA) and other public and private service agencies in Clark County Washington.**

Purpose or Goals of CCARES

The purpose or Goals of this plan is to provide guidance, establish responsibility, and ensure coordinated operations between Clark County Emergency Management officials and the ARES organization during times when there are extraordinary threats to the safety of life and/or property.

(cont on next page)

Purpose or Goals of CCARES (2)

Maximum benefits from the ARES organization can be obtained only through careful planning which identifies the organizations, agencies, and individuals concerned and assigns a definitive role to each. This plan enables agencies and organizations having emergency responsibilities to include the ARES organization in local emergency plans and programs.

Clark County ARES/RACES

- **Membership Requirements:**
 - **Current Amateur Radio Licensee:**
 - **Willingness to serve:**
 - **Membership Application:**
 - **Background Check:**
 - All applicants are subject to a background check conducted by the Clark County Sheriff's Office.
 - **On line Courses:**

Clark County ARES/RACES

- **FEMA online & classroom Courses:**
 - **Required:**
 - IS 100.a Introduction to Incident Command System (Fed disaster workers)
 - IS 700.a National Incident Management System (NIMS)
 - **Web Site:** <http://training.fema.gov/IS/crslist.asp>
 - Sign onto FEMA, click on ISP Course list, scroll to course.

Clark County ARES/RACES

- **CCARES/RACES**

- **Vest: Cost - \$15**

- **Hat: Cost - \$5**

- **Patch: Cost - \$4**

- **Magnetic Signs: Cost - \$14**

VEST



9/18.2010

13

HAT

Any **Orange / Yellow** color hat with



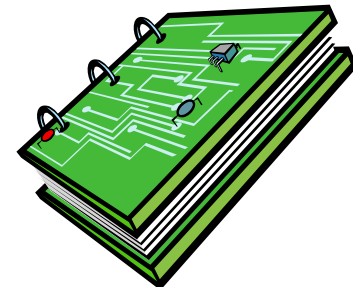
the **ARES** patch on the front.

Patch



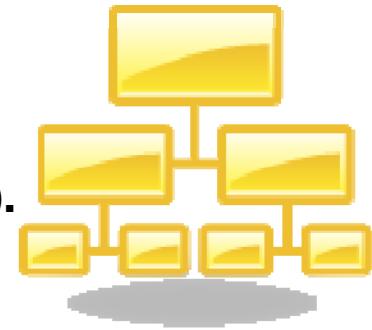
Clark County ARES/RACES

- **Operations and Training Manual:**
 - **Set-up**
 - **Organizational Structure (aligned with ICS concepts)**
 - **Organization Chart**
 - **Team Structure**
 - » **Team 0 Management Team**
 - » **Team 1-6 Geographic Teams**
 - » **Team 7 Net Control**
 - » **Team 8-12 Specialized (Agency) Teams**
 - » **Team 99**



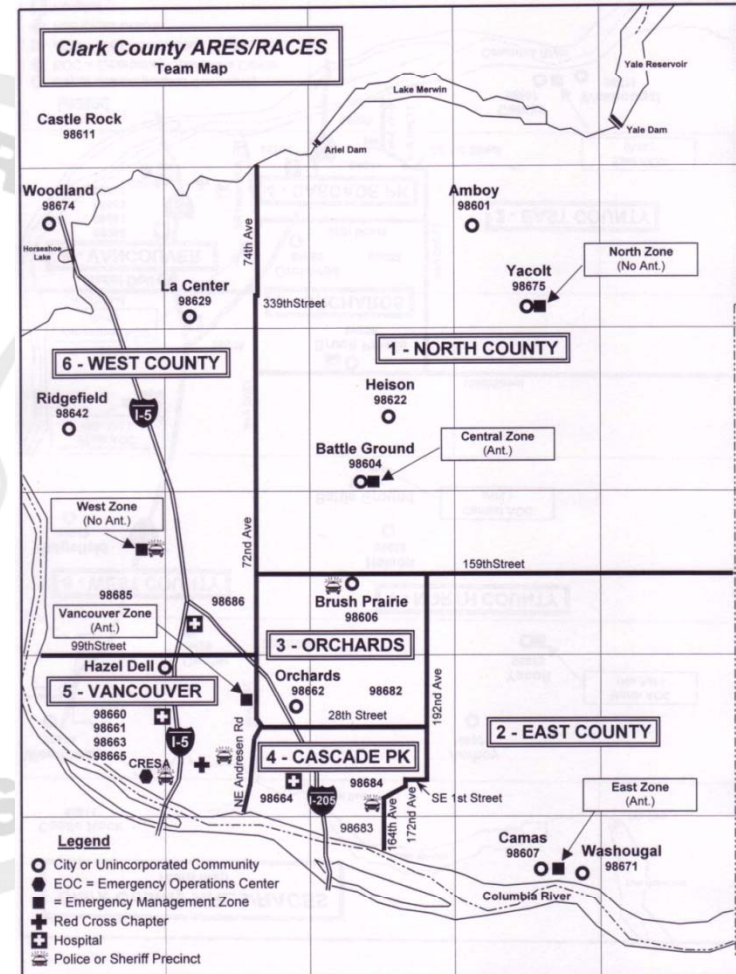
Clark County ARES/RACES

- **Clark County ARES/RACES**
- **Duties:**
 - **Management Team**
 - **Emergency Coordinator /Radio Officer (EC/RO).**
 - Gary Takis (tay-kis) – K7GJT
 - Vern Smith – Alternate – KA7DCQ
 - **Assistant Emergency Coordinators**
 - Operations – Don Peter – ND7P
 - Administration - Vacant
 - Liaisons - Law Enforcement - Perry Fladager- KD6BRK
 - - Medical - Tom Cooper– KD7DYR
 - - Fire - Mark Breakey – KB7RHI
 - Logistics – Vern Smith – KA7DCQ
 - Digital/Packet – Rob Haller – K7JAO
 - Website – Chip Chuprinko– WB7TFD
 - Training – Jerry Schue– K7KWO



Clark County ARES/RACES

- Duties
 - Geographic and Specialized (Agency) Teams
 - Team Leader and Assistant Team Leader Roles and Responsibilities
 - Team Member Responsibilities



MESSAGE FORM

Ref:

CCARES/ RACES

Operations Manual

Section 4

Section 4A – Voice Radio Communications Standard Operating Procedures

• I. INTRODUCTION

- Although traffic handling has its roots in the continuous wave (CW) mode, voice radio communications has been the mainstay of emergency communications for many years and is particularly well suited for traffic of a tactical nature during emergencies and disasters.**
- Voice radio communications can take several forms:**
 - Informal**
 - Formal**



Section 4A

I. INTRODUCTION (cont)

– Informal:



- **Communications between amateur stations while setting up and maintaining an emergency communications network.**
- **Third-party communications between officials; (There should be a minimal amount of this type of traffic.)**

Section 4A

I. INTRODUCTION (cont)

– Formal:

- **Written communications between officials using a designated message form and procedure.**
- **Written communications of a "welfare" nature going outside of the affected area.**



Section 4A – Voice Radio Communications Standard Operating Procedures #2



- **We will be focusing on the formal,
written form of communications.**

Informal traffic can usually be handled

on a

"common sense" basis.

Section 4A – Voice Radio Communications Standard Operating Procedures #3

• II. GUIDING PRINCIPLES

– The key to providing useful emergency communications is to...

- Maximize accuracy, understanding, and expediency.
- Minimize errors, confusion and delays.



I. GUIDING PRINCIPLES #2

- We do this by using a number of "tools", among which are:
 - Standardized message forms
 - International phonetic alphabet
 - Spell out numerals
 - Attention to articulation
 - Standardized procedures for requesting "repeats"



CCARES/RACES

- **Key elements of Message handling**
 - **Whose sending?**
 - **Where's it going?**
 - **What's the precedence?**

CCARES / RACES

- **Messages Handling #2**
 - **How do we send them?**
 - **Use and care of CCARES message form!**

Radio Amateur Civil Emergency Service / Amateur Radio Emergency Service

RACES / ARES MESSAGE FORM

(for use with city & county EOC, Fire, Police, Red Cross, etc.)

MSG # _____ PRECEDENCE: _____ Time filed (LOCAL): ____: ____ AM PM **24HR** DATE: _____.

E = Emergency, P = Priority, R = Routine, W = Welfare)

(mmddyyyy or mm/dd/yyyy)

TO: _____
(Receiving Official)

LOCATION: _____

FROM: _____
(Originating Official)

LOCATION: _____

Message: This is an exercise message.

“Break and text:”

_____	_____	_____	_____	_____
_____	_____	_____	_____	_____
_____	_____	_____	_____	_____
_____	_____	_____	_____	_____
_____	_____	_____	_____	_____
_____	_____	_____	_____	_____

“END OF MESSAGE”

or

“CONTINUE ON NEXT FORM”

This is an exercise message.

11/16/04 ncr (x3)

DO NOT TRANSMIT INFORMATION BELOW THIS DOUBLE LINE. OPERATOR FILL IN ONLY

Radio Location: _____

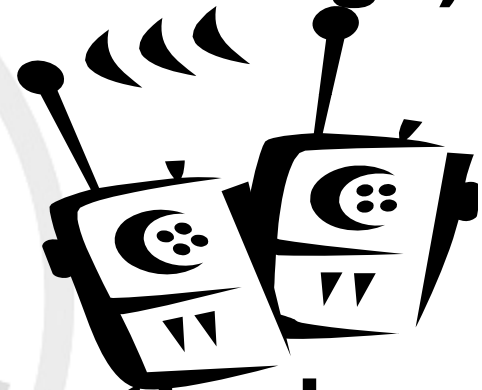
Received: _____ (24 hr.)

Radio Operator: _____

Sent: _____ (24 hr.)

(Call Sign Only)

**To maintain clarity and accuracy,
read a line (5 words in the message)
and wait for a Roger/Over
from the listener before continuing
with the next line.**



E.O.M.

“End of Message”

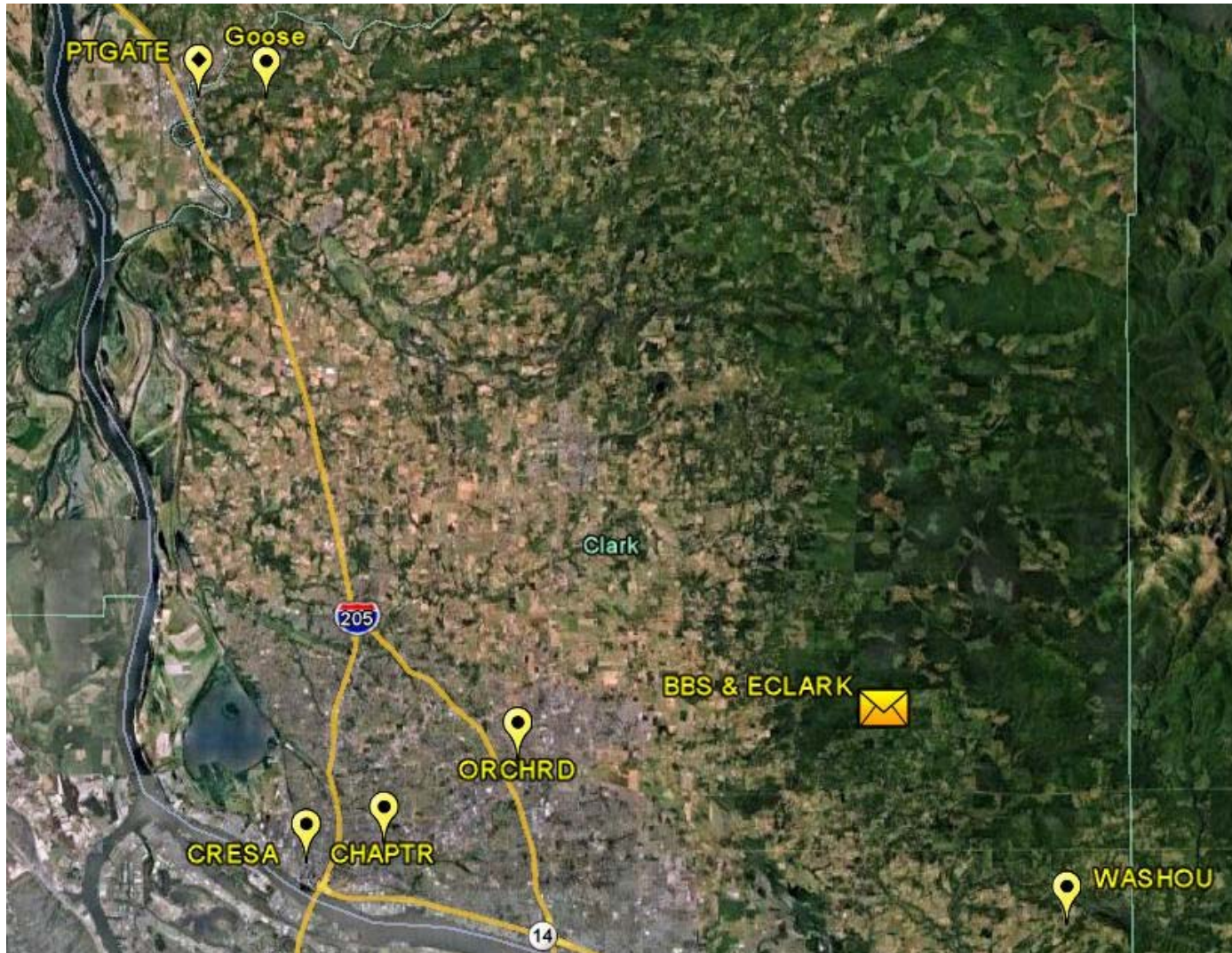
Digital Communication

- **PACKET**
- **Winlink 2000**
- **Point to Point modes**

Digital Communication

- **PACKET**
 - **144.99 [& 441.060]**
 - **Station to Station (K-K or MBX)**
 - **Mt Livingston BBS**
 - **Currently W7AIA-8**
 - **Changing to K7CLL-8**

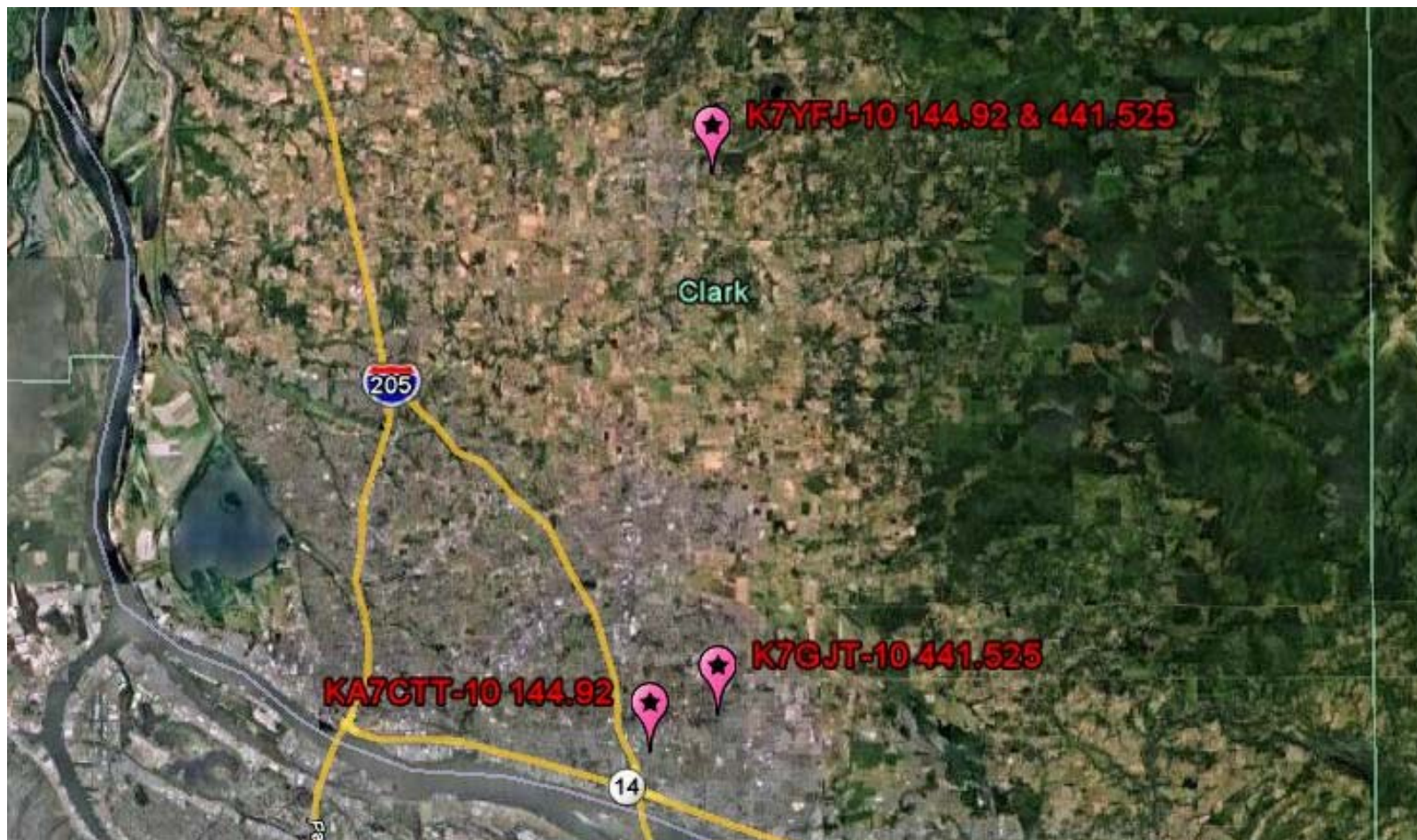
Digital Comms - PACKET



Digital Communication

- **Winlink 2000**
 - **144.92 & 441.525**
 - **VHF: K7YFJ-10 & KA7CTT-10**
 - **UHF: K7YFJ-10 & K7GJT-10**

Digital Comms – WL2K RMSs



Point to Point Modes

- **PACKET**
 - WinPack
 - Hyperterm
 - IP Serial (part of OutpostPM program)
- **Other Narrow Band**
 - NBEMS
 - Winmor

Member Expectations

- **Active Involvement**
- **Attend Monthly Meetings**
 - 3rd Monday except December
- **Learn you job(s) on the Team**
 - Attend team meetings for training
- **Attend exercises**
- **Preparedness**
 - Personal items
 - Equipment items



www.ccareswa.org

**Clark County
Washington**
Amateur Radio



Amateur Radio Emergency Services
Radio Amateur Civil Emergency Service

Home	About Us	Alerts	Teams	Packet	Resources	Contact Us
----------------------	--------------------------	------------------------	-----------------------	------------------------	---------------------------	----------------------------

STATUS: INACTIVE

Friday Sep 17 2010 22:11

CURRENT RIVER LEVELS

Lewis: 8.0 ft 12.0 v
5th Plain test: 0.0 ft 0.0 v
Salmon Creek: 0.3 ft 11.3 v
Washougal: 0.9 ft 12.5 v
[River Monitor Page](#)

DAILY AMATEUR NEWS

- [Please Keep 7.065 MHz Open for Tropical Storm Karl Communications](#)
- [Tim Duffy, K3LR, to Receive RCA's™s Goldwater Award](#)
- [The K7RA Solar Update](#)
- [more news...](#)
- [Weekly Podcast](#)

NET CONTROL

- Sep 21 - K7VUO Jared
- Sep 28 - N7DY Don
- Oct 05 - ND7P Don
- Oct 12 - WB7ESV David
- Oct 19 - AC7RU Mike

INTELLIGENCE

- [ARES News](#)
- [Not an Amateur?](#)

Welcome to the Clark County Washington ARES web site.

This web site benefits our local ARES organization by providing information, schedules and the forms that help our organization function smoothly. It also reveals the organization that is available to assist your organization in providing intra and extra-organization communications during emergency situations. We provide communications to supplement your existing communications links or provide replacement links should primary links fail. We work closely with CRESA (Clark Regional Emergency Service Agency) to provide emergency communications for their participating members.

[Member Alerttag](#) -- [Click Here to Follow Code](#)

ANNOUNCEMENTS

09/06/2010 - September CCARES/RACES meeting

ALL Members - Be sure and mark your calendars and attend the September 20th CCARES/RACES Meeting at the First Presbyterian Church on Main St.

Dave/WB7ESV will be doing CPR/First Aid familiarization training.

UPCOMING EVENTS


- **ARES Net every Tuesday at 7:00 p.m. 147.24 repeater**
- 09/11/2010 10:00 - [CCARC - VE Amateur Radio License Testing](#)
- 09/14/2010 11:30 - [Team Leader/Alternates Meeting](#)
- 09/20/2010 7:00 pm - [Regular CCARES/RACES Meeting](#)
- 09/21/2010 7:00 pm - [Digital \(Packet\) Group Meeting](#)
- 10/12/2010 11:30 - [Team Leader/Alternates Meeting](#)
- 10/15/2010 10:00 - [CCARC - VE Amateur Radio License Testing](#)
- 10/18/2010 7:00 pm - [Regular CCARES/RACES Meeting](#)
- 11/09/2010 11:30 - [Team Leader/Alternates Meeting](#)
- 11/13/2010 00:00 - [Annual CCARES/RACES SET](#)

9/18.2010

38

Clark County ARES/RACES

**Assignment to a
Team!**





WHEN ALL ELSE FAILS...



AMATEUR RADIO



WWW.ARRL.ORG

Clark County ARES/RACES

- **Welcome to Clark County**



- **ARES/RACES!!!!!!**



Thank you!!!!